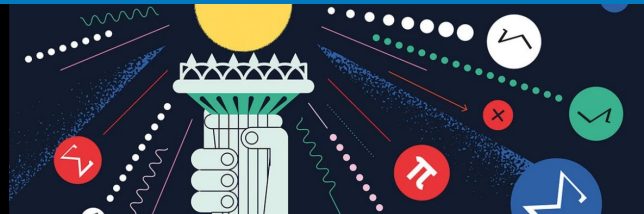
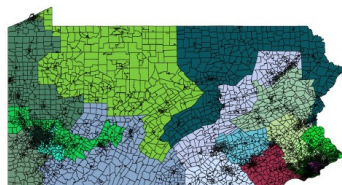


How Math Can Save Democracy

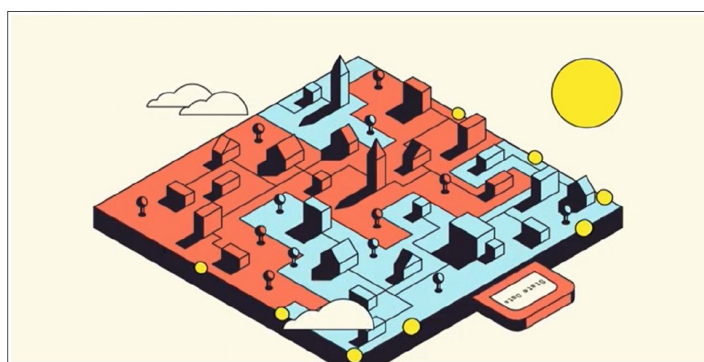


Can Math
Solve the



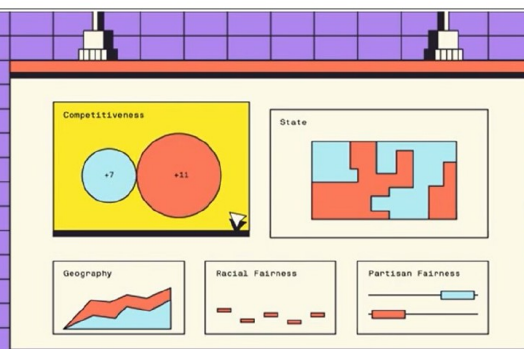
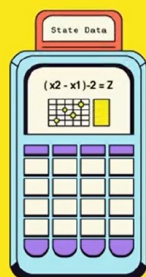
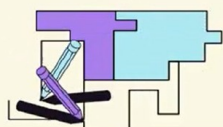
Gerrymandering
Problem?

What is Gerrymandering?



Which parameters and data can a mathematician look at to check it?

How it works



Explain in one sentence the use of each equation.

$$EG = \frac{|(\text{one party's wasted votes}) - (\text{other party's wasted votes})|}{\text{total number of votes}}$$

$$PP(S) = 4\pi \frac{\text{area enclosed by the district}}{(\text{perimeter of the district})^2}$$